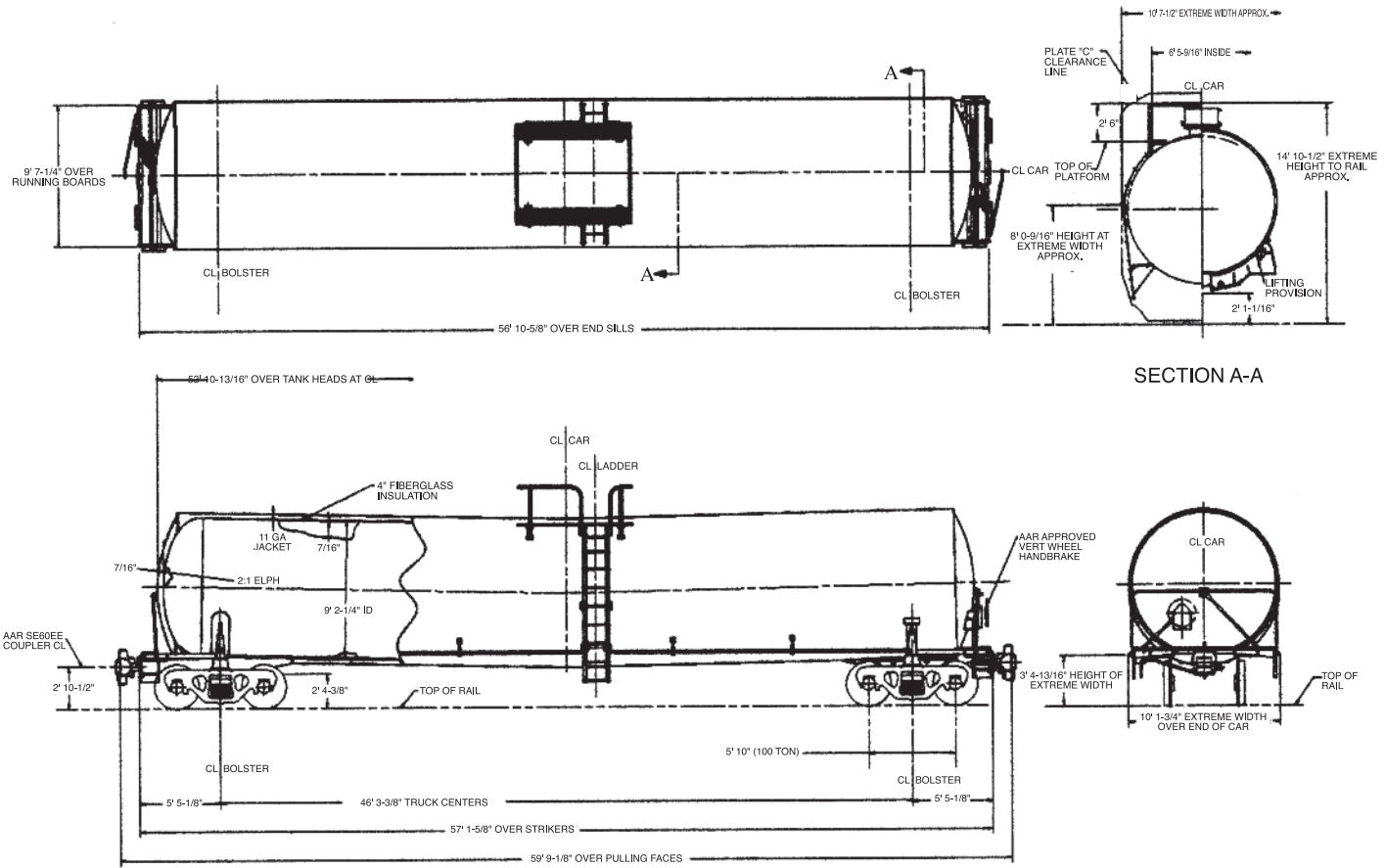


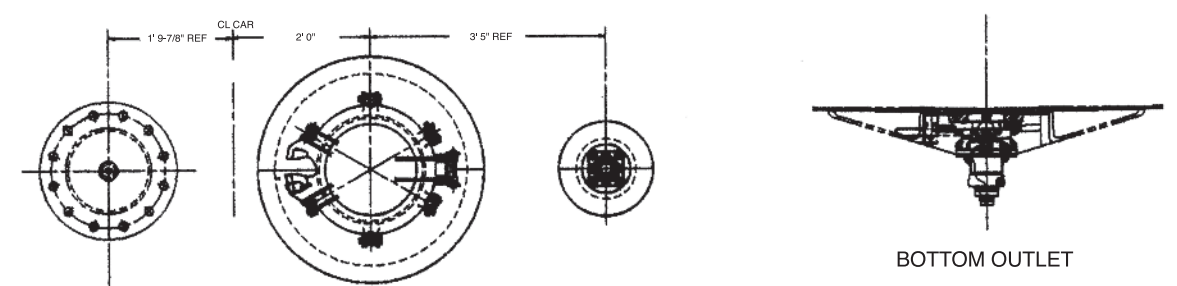
GENERAL SERVICE

25,500 Gallon Capacity
263,000 lbs. Gross Rail Load
DOT 111A100W1

GENERAL ARRANGEMENT



MANWAY & FITTINGS



SMBC RAIL SERVICES



Insulated tank cars are specifically adaptable for the transportation of products such as:

- Food products**
 Hydrogenated vegetable oils, sugars and syrups.
- Petroleum products**
 Lubricating oil, heavy fuel oil, asphalts and flammable liquids (high vapor pressure.)
- Chemical products**
 Phenol, formaldehyde, rosin, resins, plasticizers.

SPECIFICATIONS

GENERAL DATA **21,000** **23,500** **25,500**

Specification Stencilled*	DOT 111A100W1	DOT 111A100W1	DOT 111A100W1
Shell Full Capacity	21,000 Gallons	23,500 Gallons	25,500 Gallons
Gross Rail Load*	263,000 lbs.	263,000 lbs.	263,000 lbs.
Estimated Lightweight	69,100 lbs.	72,900 lbs.	75,900 lbs.
Length Over Strikers	47' 9-5/8"	52' 11-5/8"	57' 1-5/8"
Truck Centers	36' 11-3/8"	42' 1-3/8"	46' 3-3/8"
Height, Extreme	14' 11-5/8"	14' 11"	14' 10-1/2"
Width, Extreme	10' 7-1/2"	10' 7-1/2"	10' 7-1/2"

TANK

Class*	DOT 111A100W1	DOT 111A100W1	DOT 111A100W1
Inside Diameter	110 1/4"	110 1/4"	110 1/4"
Slope	1/4" per foot	1/4" per foot	1/4" per foot
Length Over Tank Heads	44' 6-13/16"	49' 8-13/16"	53' 10-13/16"
Plate Thickness	7/16"	7/16"	7/16"
Heater System	12 Lines 8" C.S.	Exterior Half Oval System with 4" Fiberglass Insulation	

TANK FITTINGS

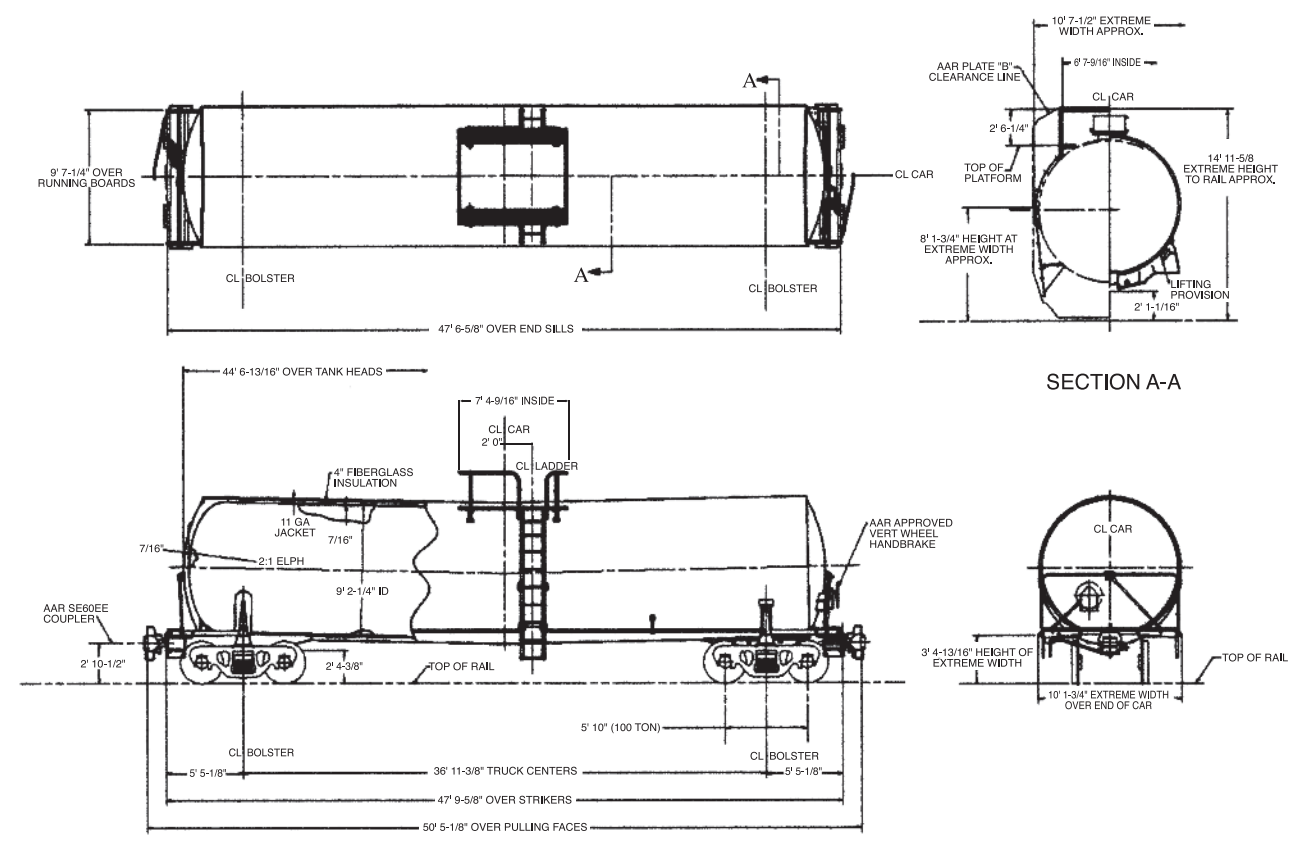
Manway Cover	Cast Steel, Gr. B, 6-bolt	Cast Steel, Gr. B, 6-bolt	Cast Steel, Gr. B, 6-bolt
Manway Nozzle	20"	20"	20"
Siphon Pipe	N/A	N/A	N/A
Siphon Valve	N/A	N/A	N/A
Air Inlet	N/A	N/A	N/A
Safety Valve	75 psi C.S.	75 psi C.S.	75 psi C.S.
Vacuum Relief Valve	S.S.	S.S.	S.S.
Gauging Device	S.S. Visual Marker	S.S. Visual Marker	S.S. Visual Marker
Bottom Outlet Valve	Bottom Operated Ball Valve	Bottom Operated Ball Valve	Bottom Operated Ball Valve
Sump	N/A	N/A	N/A

TRUCKS

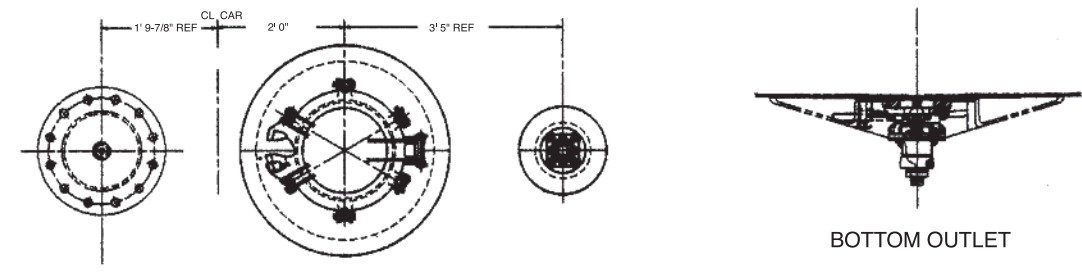
Type	100 Ton Capacity	100 Ton Capacity	100 Ton Capacity
Wheels	Steel, 36" One-Wear	Steel, 36" One-Wear	Steel, 36" One-Wear

21,000 Gallon Capacity
263,000 lbs. Gross Rail Load
DOT 111A100W1

GENERAL ARRANGEMENT

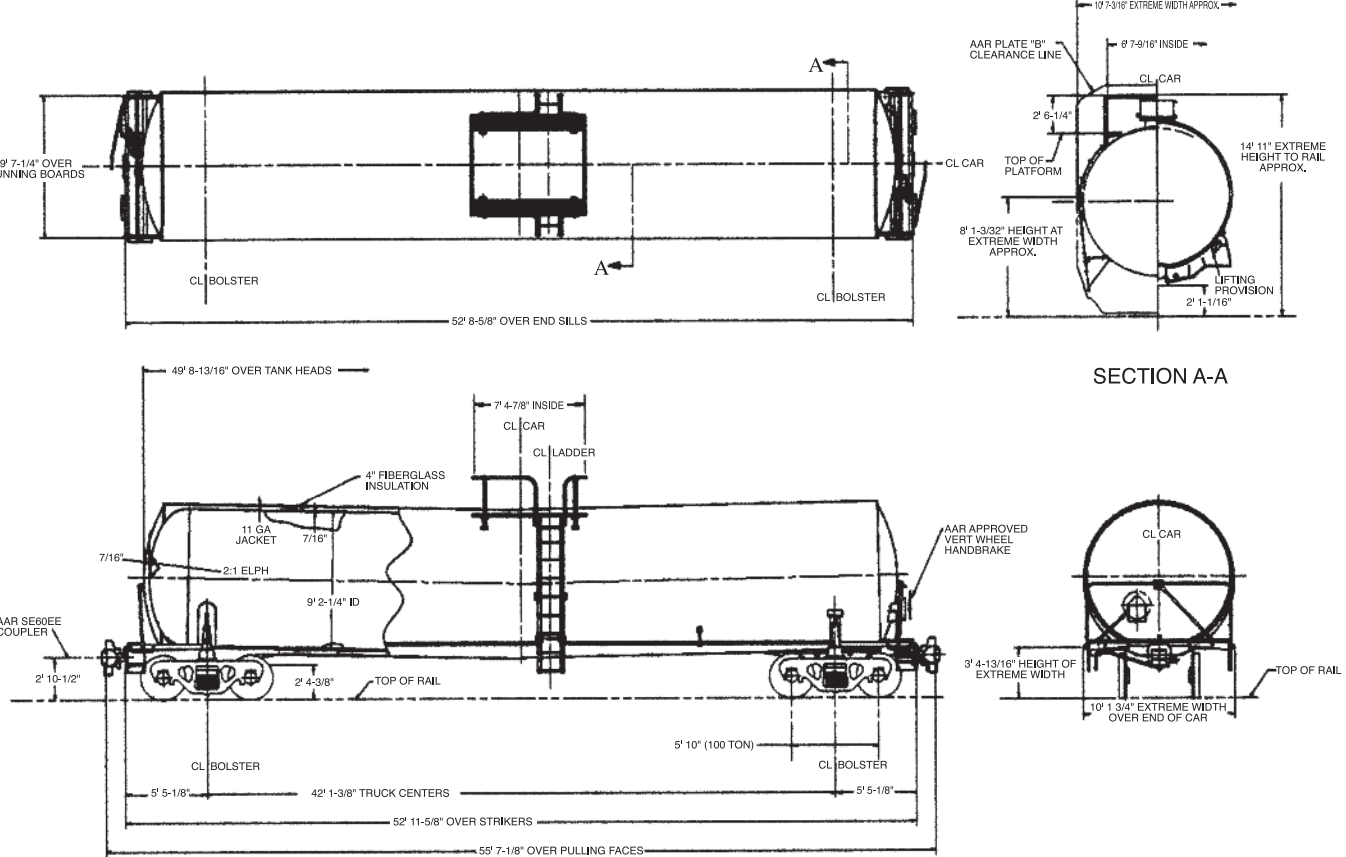


MANWAY & FITTINGS ARRANGEMENT



23,500 Gallon Capacity
263,000 lbs. Gross Rail Load
DOT 111A100W1

GENERAL ARRANGEMENT



MANWAY & FITTINGS ARRANGEMENT

