



# SMBC RAIL SERVICES

SULFURIC ACID



Tank cars specifically designed for the transportation of sulfuric acid.

# SPECIFICATIONS

**13,640 Gallon Capacity**  
**263,000 lbs. Gross Rail Load**  
**DOT 111A100W2**

## GENERAL DATA

**13,640**

<b>Specification Stencilled</b> .....	<b>DOT 111A100W2</b>
<b>Shell Full Capacity</b> .....	<b>13,640 Gallons</b>
<b>Gross Rail Load</b> .....	<b>263,000 lbs.</b>
<b>Estimated Lightweight</b> .....	<b>55,900 lbs.</b>
<b>Length Over Strikers</b> .....	<b>39' 11-11/16"</b>
<b>Truck Centers</b> .....	<b>29' 1-7/16"</b>
<b>Height, Extreme</b> .....	<b>14' 1-9/16"</b>
<b>Width, Extreme</b> .....	<b>9' 10-3/8"</b>

## TANK

<b>Class</b> .....	<b>DOT 111A100W2</b>
<b>Inside Diameter</b> .....	<b>98"</b>
<b>Length Over Tank Heads</b> .....	<b>36' 5-5/16"</b>
<b>Plate Thickness</b> .....	<b>9/16"</b>

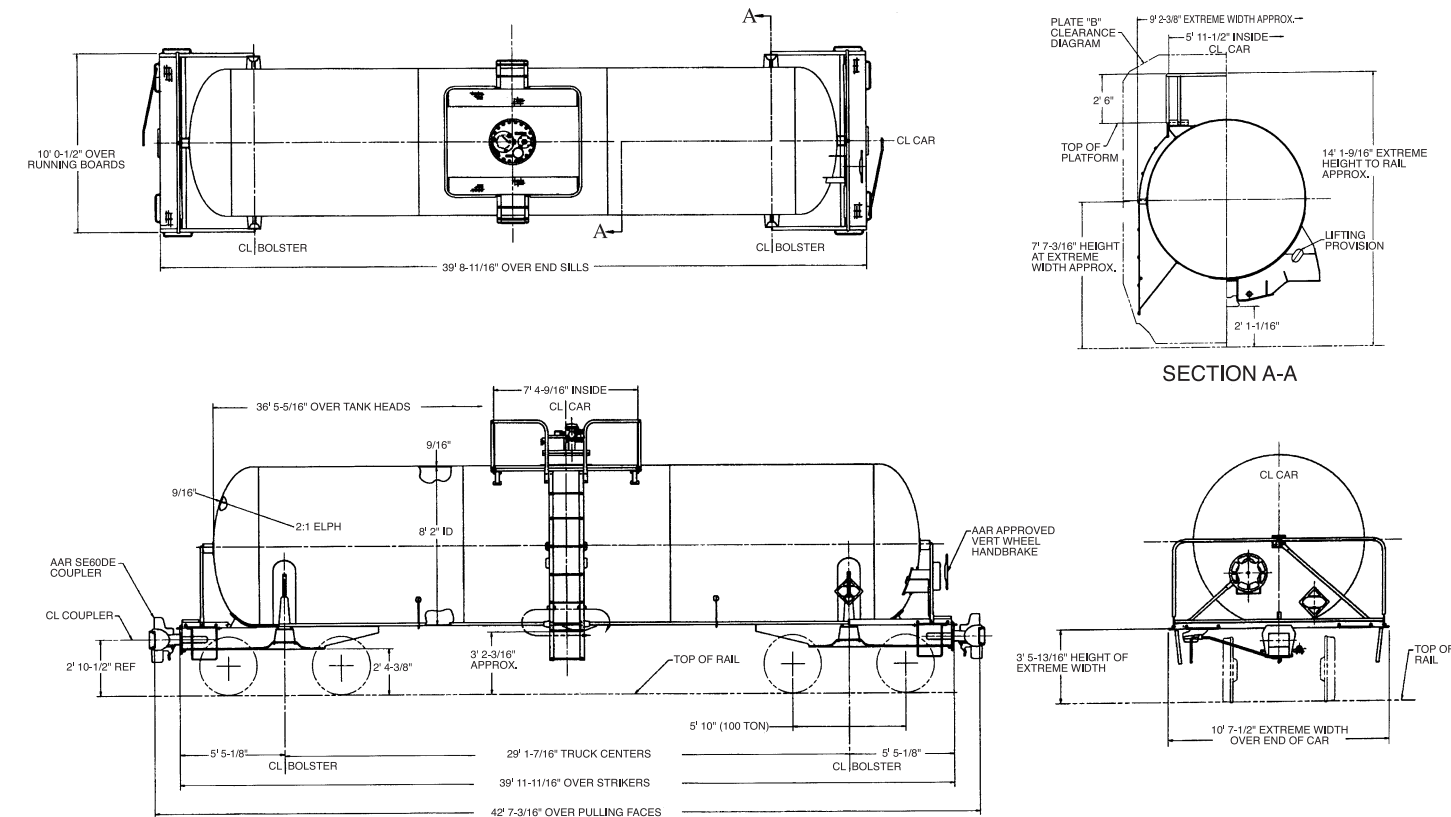
## TANK FITTINGS

<b>Manway Cover</b> .....	<b>ASTM A-516 Gr. 70 C.S.</b>
<b>Manway Nozzle</b> .....	<b>22"</b>
<b>Siphon Pipe</b> .....	<b>2" C.S. Pipe</b>
<b>Siphon Valve</b> .....	<b>N/A</b>
<b>Air Inlet</b> .....	<b>1" C.S. Screwed Ball Valve</b>
<b>Safety Valve</b> .....	<b>75 psi C.S.</b>
<b>Vacuum Relief Valve</b> .....	<b>S.S.</b>
<b>Gauging Device</b> .....	<b>S.S. Visual Marker</b>
<b>Bottom Outlet Valve</b> .....	<b>N/A</b>
<b>Sump</b> .....	<b>Low Profile</b>

## TRUCKS

<b>Type</b> .....	<b>100 Ton Capacity</b>
<b>Wheels</b> .....	<b>Steel, 36" One-Wear</b>

## GENERAL ARRANGEMENT



## MANWAY & FITTINGS ARRANGEMENT

