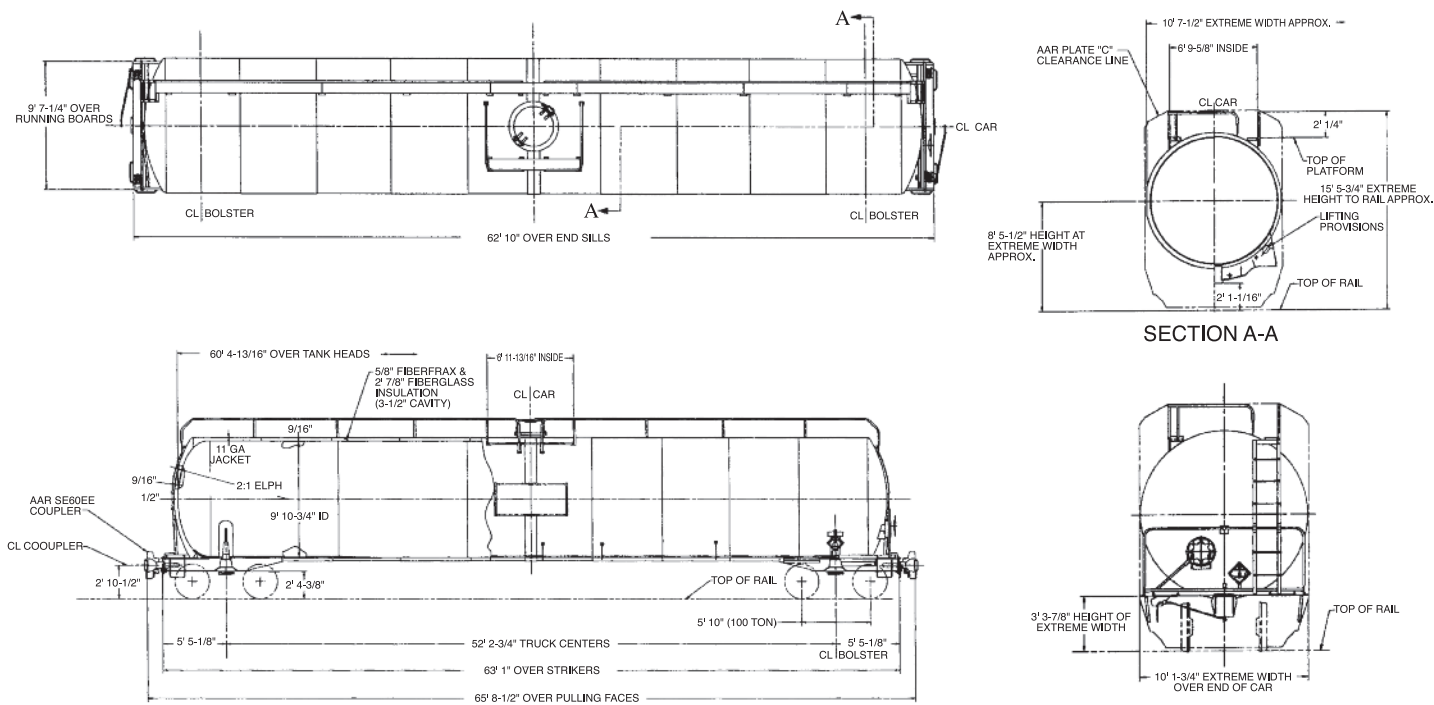


33,600 Gallon Capacity
263,000 lbs. Gross Rail Load
DOT 105J300W

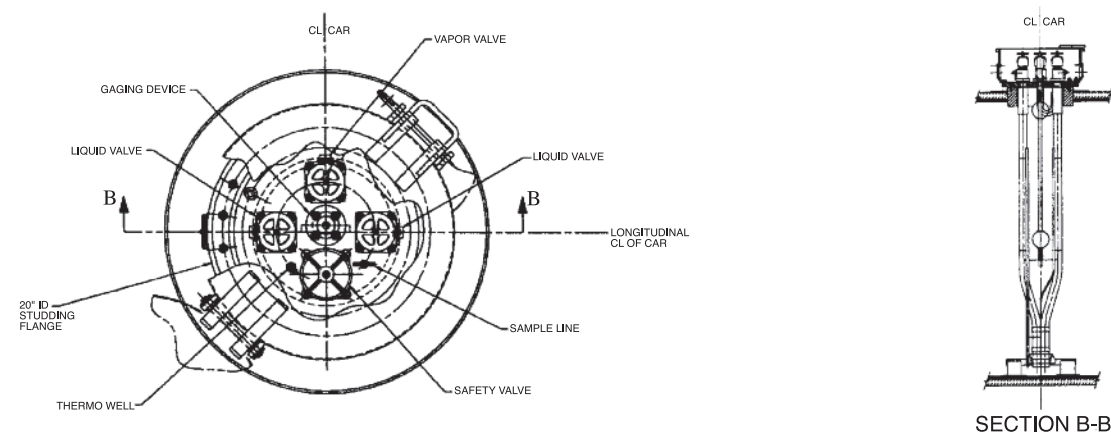
VCM/LPG

GENERAL ARRANGEMENT



Tank car specifically designed for the transportation of VCM/LPG gasses.

MANWAY & FITTINGS



SPECIFICATIONS

24,850 Gallon Capacity
263,000 lbs. Gross Rail Load
DOT 105J300W

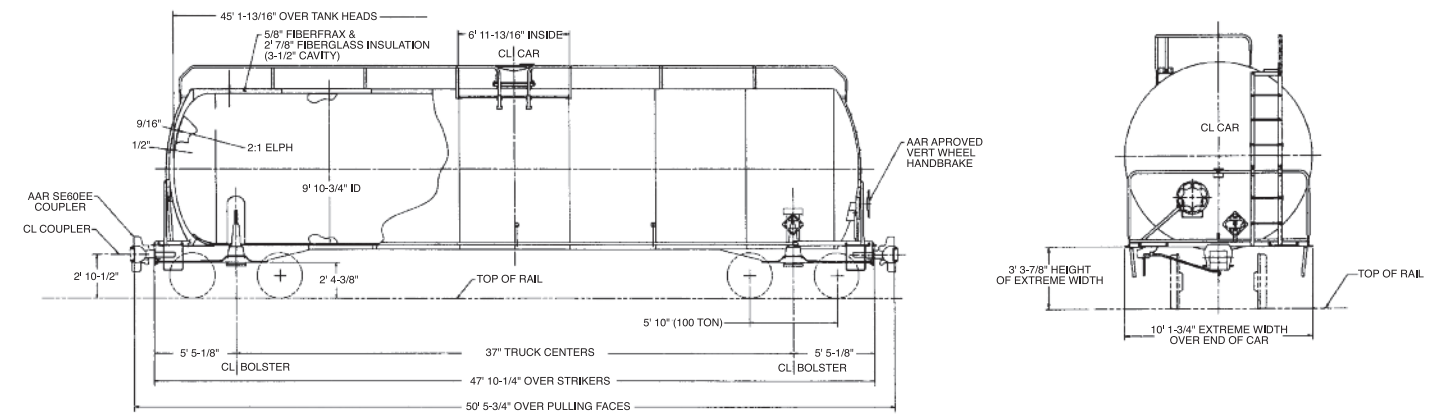
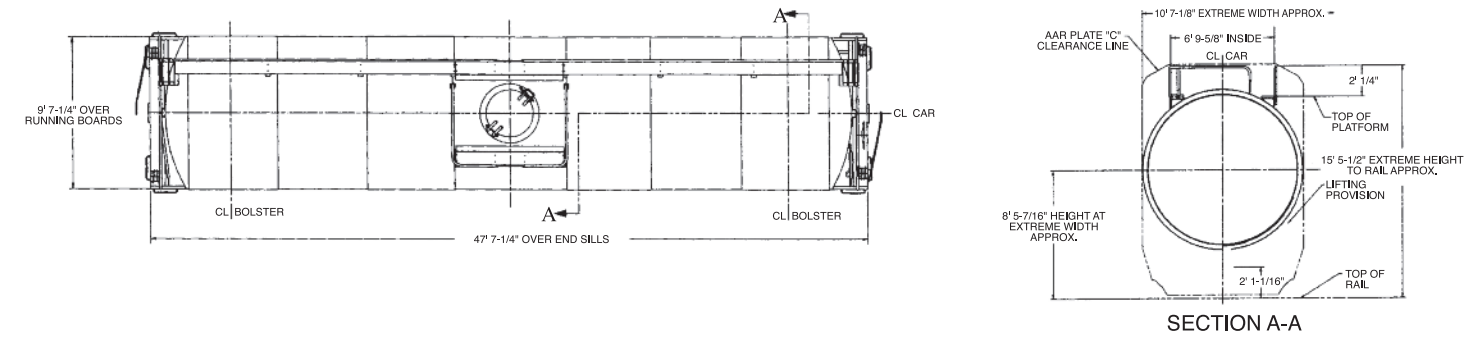
| GENERAL DATA | 24,850 | 33,600 |
|--------------------------|----------------|----------------|
| Specification Stencilled | DOT 105J300W | DOT 105J300W |
| Shell Full Capacity | 24,850 Gallons | 33,600 Gallons |
| Gross Rail Load | 263,000 lbs. | 263,000 lbs. |
| Estimated Lightweight | 82,100 lbs. | 96,500 lbs. |
| Length Over Strikers | 47' 10-1/4" | 63' 1" |
| Truck Centers | 37' | 52' 2-3/4" |
| Height, Extreme | 15' 5-1/2" | 15' 5-3/4" |
| Width, Extreme | 10' 7-1/8" | 10' 7-1/2" |

| TANK | DOT 105J300W | DOT 105J300W |
|------------------------|--------------|--------------|
| Class | DOT 105J300W | DOT 105J300W |
| Inside Diameter | 118 3/4" | 118 3/4" |
| Length Over Tank Heads | 45' 1-13/16" | 60' 4-13/16" |
| Plate Thickness | 9/16" | 9/16" |

| TANK FITTINGS | ASTM A516 GR. 70 | ASTM A516 GR. 70 |
|---------------------|------------------|------------------|
| Manway Cover | ASTM A516 GR. 70 | ASTM A516 GR. 70 |
| Manway Nozzle | 20" | 20" |
| Eduction Pipe (2) | 3" SCH. 80 C.S. | 3" SCH. 80 C.S. |
| Liquid Valve (2) | 2" S.S. Trim | 2" S.S. Trim |
| Vapor Valve | 2" S.S. Trim | 2" S.S. Trim |
| Safety Valve | 225 psi | 225 psi |
| Vacuum Relief Valve | N/A | N/A |
| Gauging Device | Magnetic | Magnetic |
| Bottom Outlet Valve | N/A | N/A |
| Sump | N/A | N/A |

| TRUCKS | 100 Ton Capacity | 100 Ton Capacity |
|--------|---------------------|---------------------|
| Type | 100 Ton Capacity | 100 Ton Capacity |
| Wheels | Steel, 36" One-Wear | Steel, 36" One-Wear |

GENERAL ARRANGEMENT



MANWAY & FITTINGS

