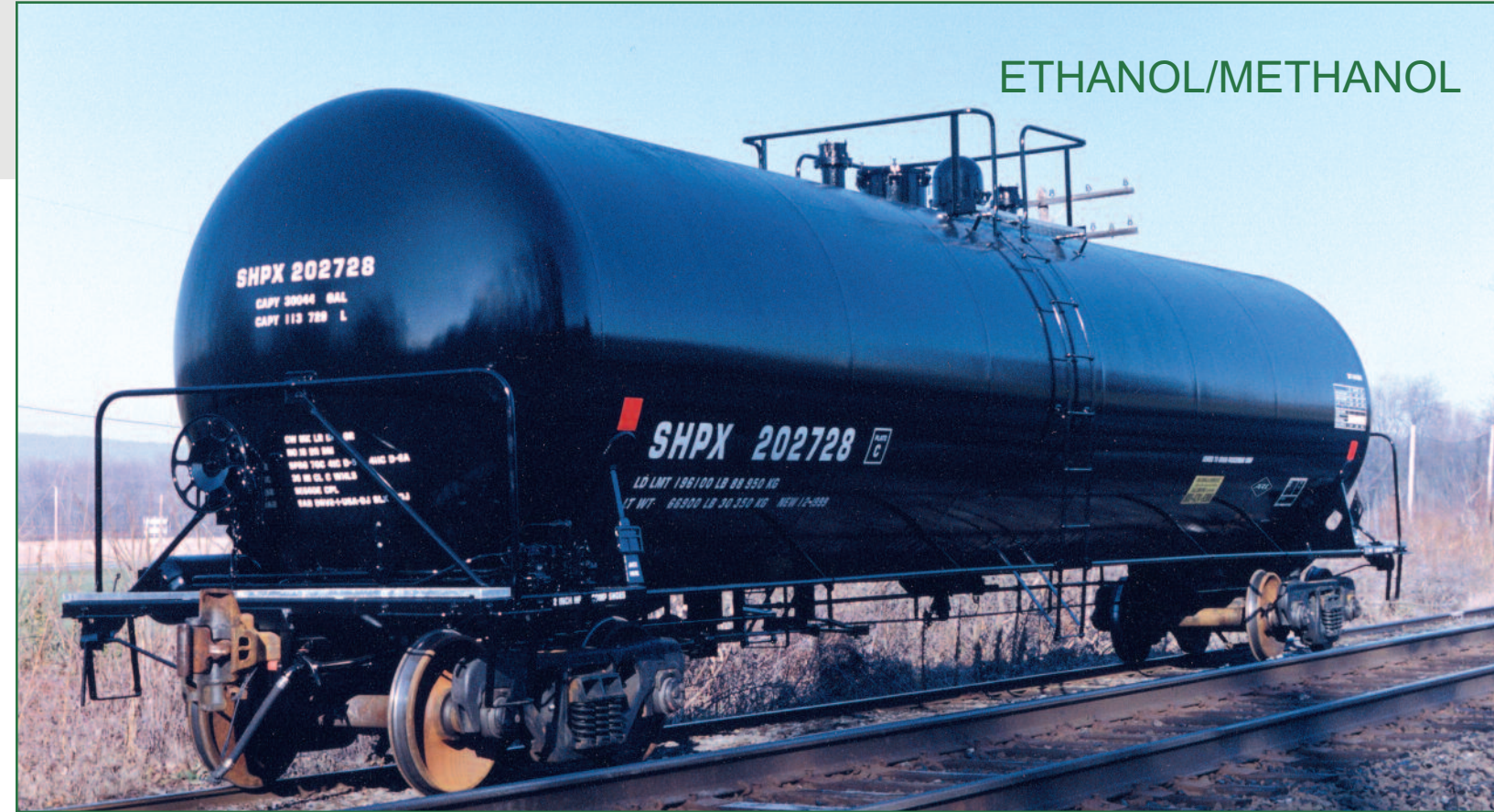


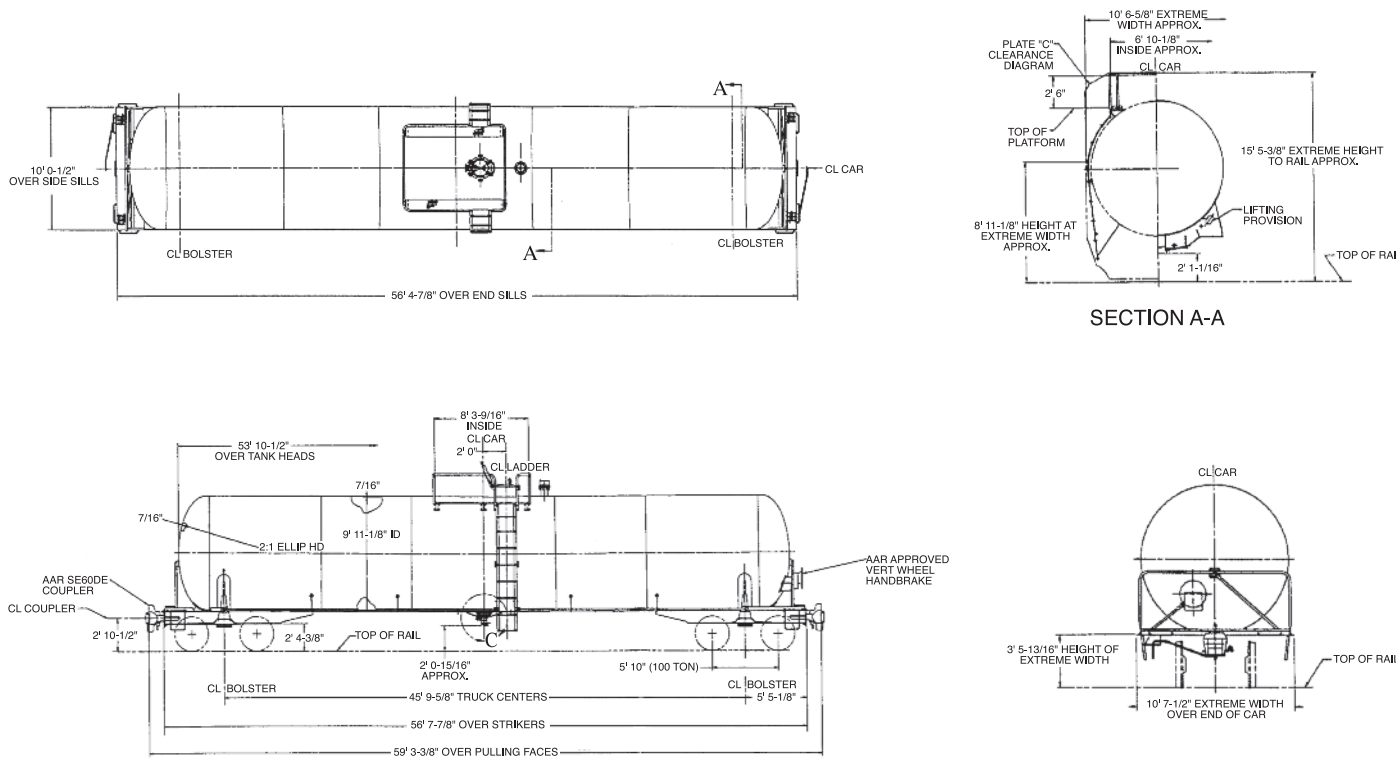


**30,000 Gallon Capacity
Slope Bottom
263,000 lbs. Gross Rail Load
DOT 111A100W1**

ETHANOL/METHANOL

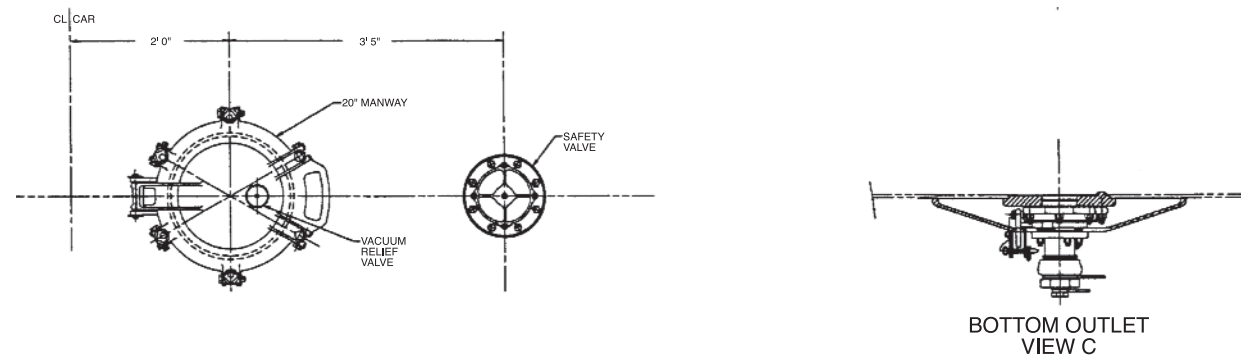


GENERAL ARRANGEMENT



Tank car specifically designed for the transportation of ethanol and methanol.

MANWAY & FITTINGS



SPECIFICATIONS

**30,000 Gallon Capacity
Straight Barrel
263,000 lbs. Gross Rail Load
DOT 111A100W1**

GENERAL DATA	30,000 Straight Barrel	30,000 Slope Bottom
--------------	---------------------------	------------------------

Specification Stencilled	DOT 111A100W1	DOT 111A100W1
Shell Full Capacity	30,000 Gallons	30,000 Gallons
Gross Rail Load	263,000 lbs.	263,000 lbs.
Estimated Lightweight	65,600 lbs.	65,700 lbs.
Length Over Strikers	56' 6-3/16"	56' 7-7/8"
Truck Centers	45' 7-15/16"	45' 9-5/8"
Height, Extreme	15' 5-1/2"	15' 5-1/2"
Width, Extreme	10' 6-15/16"	10' 6-15/16"

TANK

Class	DOT 111A100W1	DOT 111A100W1
Inside Diameter	119 1/8"	119 1/8"
Slope	N/A	5/64" per foot (2" drop to center)
Length Over Tank Heads	53' 9-5/8"	53' 10-1/2"
Plate Thickness	7/16"	7/16"

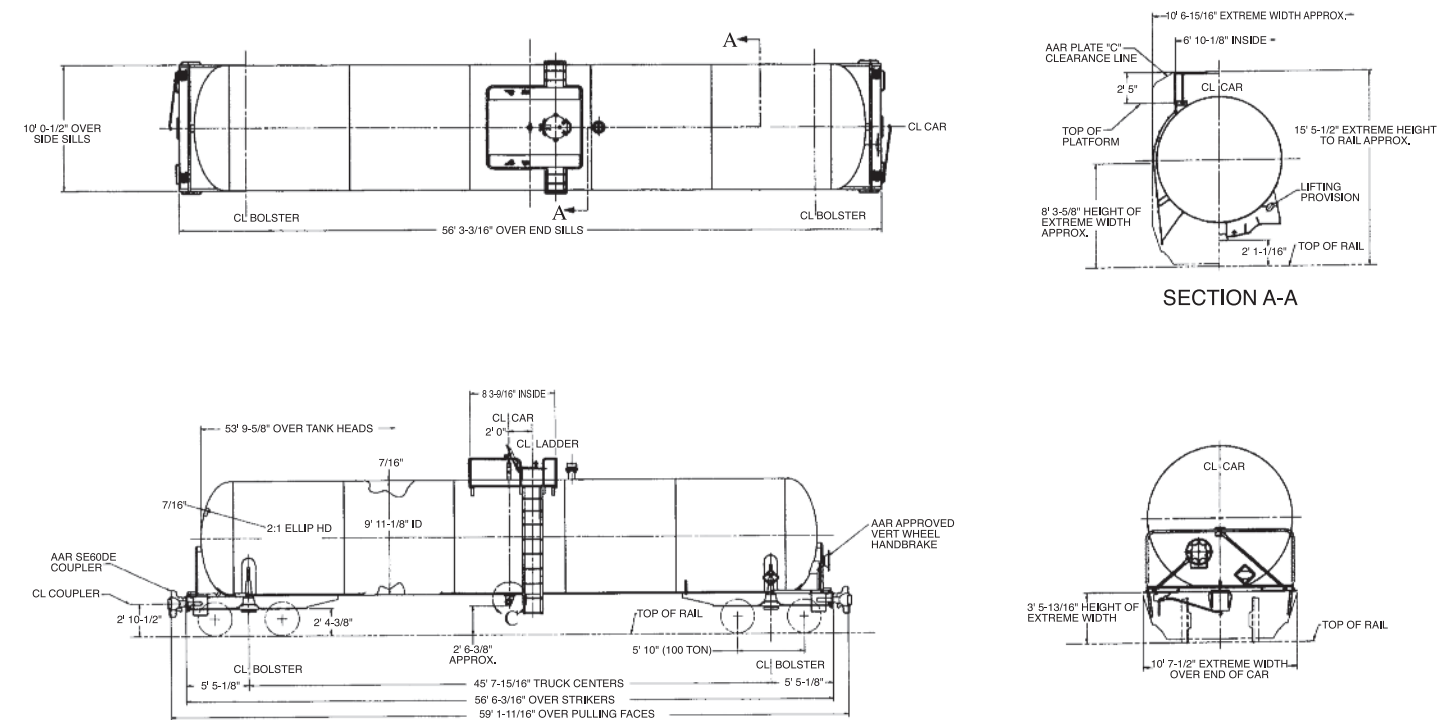
TANK FITTINGS

Manway Cover	C.S., Gr. B	C.S., Gr. B
Manway Nozzle	20"	20"
Siphon Pipe	OPTIONAL	N/A
Siphon Valve	OPTIONAL	N/A
Air Inlet	OPTIONAL	N/A
Safety Valve	75 psi	75 psi
Vacuum Relief Valve	S.S.	S.S.
Gauging Device	S.S. Visual Marker	S.S. Visual Marker
Bottom Outlet Valve	Bottom Operated Ball Valve	Bottom Operated Ball Valve
Sump	N/A	N/A

TRUCKS

Type	100 Ton Capacity	100 Ton Capacity
Wheels	Steel, 36" One-Wear	Steel, 36" One-Wear

GENERAL ARRANGEMENT



MANWAY & FITTINGS ARRANGEMENT

